

R100

ACCESSORY GUIDE



Power

Adapter - PA06

PA06EU01 (with EU Power Cord), PA06US01 (with US Power Cord)



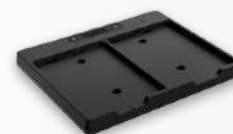
Expansion Battery - PD02

PD020002



Battery Charger - PC04

PC04EU01 (with EU Adapter), PC0US01 (with US Adapter)



Carry

Hand Strap - CA05

CA050001



Adapter

| Model Name: PA06



| FEATURES & BENEFITS

The Adapter is designed to supply power to the device and charge its internal battery from an AC power source. It includes a country-specific power cord that is compatible with your local power outlets.

| SPECIFICATIONS

- Interface: Type-C
- Adapter AC Input: 100-240V 50/60Hz, 1.7A
- Adapter DC Output: 5V/3A 9V/3A 12V/3A 15V/3A 20V/3.25A 65W Max
- Dimensions: 90.0 × 51.0 × 28.5mm / 3.54 × 2.0 × 1.1"
- Weight: 181g/0.4lbs
- Cable Length: 1500mm/4.9'

| SKU ID

PA06EU01 (with EU Power Cord), PA06US01 (with US Power Cord)

Expansion Battery

| Model Name: PD02



| FEATURES & BENEFITS

The Battery serves as a stable power source for the device when the AC adapter is not connected. The battery is removable, allowing users to swap it out when needed, without any concerns of the device suddenly losing power due to a low battery.

| SPECIFICATIONS

- **Battery Type:** 7.6V, 4200mAh Lithium-ion Battery
- **Dimensions:** 117.3 × 86.0 × 7.0 mm / 4.6 × 3.4 × 0.3"
- **Weight:** 156g/0.34lbs

| SKU ID

PD020002

Battery Charger

| Model Name: PC04



| FEATURES & BENEFITS

The Battery Charger includes a country-specific adapter that is compatible with your local power outlet. The dual-charge bay design allows you to charge up to 2 batteries simultaneously

| SPECIFICATIONS

- **Interface:** Type-C 19V
- **Adapter Input:** 100~240V,1.7A 50~60Hz
- **Adapter Output:** 5V/3A 9V/3A 12V/3A 15V/3A 20V/3.25A 65W Max
- **Dimensions:** 183×155×18mm/
- **Weight:** 236g/0.52lbs
- **Compatible Model:** PC04 (R100 Expansion Battery)

| SKU ID

PC04EU01 (with EU Adapter), PC04US01 (with US Adapter)

Hand Strap

| Model Name: CA07



| FEATURES & BENEFITS

The Hand Strap is a lightweight and portable accessory that comes with a strap for holding the tablet. It helps prevent the tablet from slipping and improve work efficiency.

| SPECIFICATIONS

- **Main Material:** 245.0 × 165.0mm / 9.6 × 6.5"
- **Dimensions:** M4L7 Screw × 4

| SKU ID

CA070001



RUGSTORM

Specifications subject to change without notice.