

# R80

# ACCESSORY GUIDE

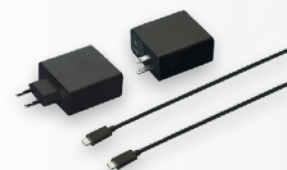


## Power

---

### Charger - PA02

PA02EU01 (with EU Plug), PA02US01 (with US Plug)



### Expansion Battery - PD02

PD020002



## Function

---

### RJ45 Module - FA01

FA010001



### RS232 Module - FC01

FC010001



### USB Module - FD01

FD010001



### Barcode Reader - FE01

FE010001



## Fix

---

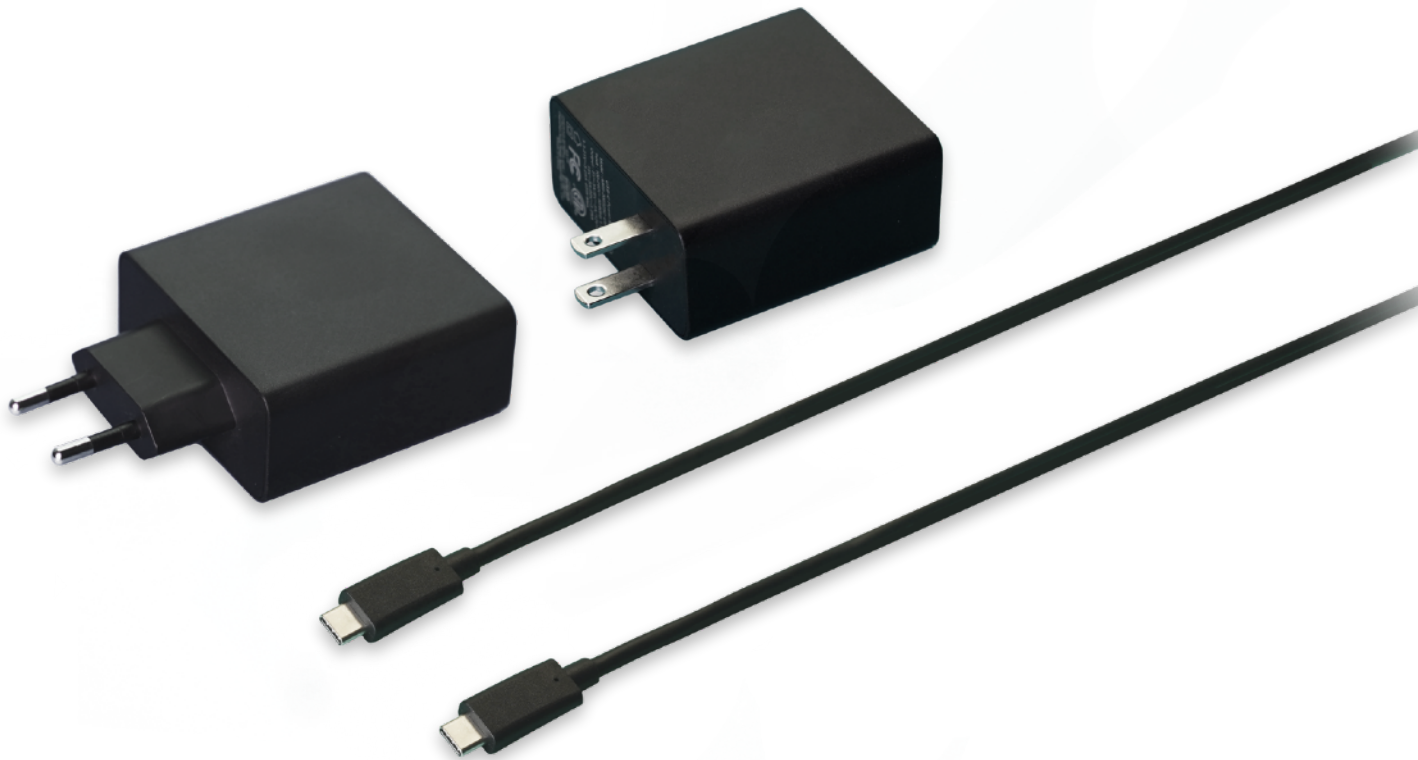
### Office Dock - XB01

XB010001



# Charger

| Model Name: PA02



## | FEATURES & BENEFITS

The Charger is designed to supply power to the device and charge its internal battery from an AC power source. It includes a country-specific plug that is compatible with your local power outlets.

## | SPECIFICATIONS

- **Input:** 100V-240V AC, 50/60HZ, 1.7A
- **Output:** 5V/3A 9V/2A 12V/3A,15V/3A,20V/3.25A,65W
- **Dimensions:** 60.0 × 29.0 × 60.0mm / 2.4 × 1.1 × 2.4"
- **Weight:** 135g/0.29lbs
- **Cable Length:** 1200mm/3.9'

## | SKU ID

PA02EU01 (with EU Plug), PA02US01 (with US Plug)

# Expansion Battery

| Model Name: PD02



## | FEATURES & BENEFITS

The Battery serves as a stable power source for the device when the AC adapter is not connected. The battery is removable, allowing users to swap it out when needed, without any concerns of the device suddenly losing power due to a low battery.

## | SPECIFICATIONS

- **Battery Type:** 7.6V, 4200mAh Lithium-ion Battery
- **Dimensions:** 117.3 × 86.0 × 7.0 mm / 4.6 × 3.4 × 0.3"
- **Weight:** 156g/0.34lbs

## | SKU ID

PD020002

# RJ45 Module

| Model Name: FA01



## | FEATURES & BENEFITS

The RJ45 Module can enhance the functionality of your tablets, making it suitable for a broader range of applications. The straightforward module replacement design allows for easy replacement.

## | SPECIFICATIONS

- **Interface:** RJ45
- **Dimensions:** 69.8 × 22.9 × 18.2mm / 2.7 × 0.9 × 0.8"
- **Weight:** 16g/0.04lbs

## | SKU ID

FA010001



# RS232 Module

| Model Name: FC01



## | FEATURES & BENEFITS

The RS232 Module can enhance the functionality of your tablets, making it suitable for a broader range of applications. The straightforward module replacement design allows for easy replacement.

## | SPECIFICATIONS

- **Interface:** RS232
- **Dimensions:** 69.8 × 22.9 × 18.2mm / 2.7 × 0.9 × 0.7"
- **Weight:** 18g/0.04lbs

## | SKU ID

FC010001

# USB Module

| Model Name: FD01



## | FEATURES & BENEFITS

The USB Module can enhance the functionality of your tablets, making it suitable for a broader range of applications. The straightforward module replacement design allows for easy replacement.

## | SPECIFICATIONS

- **Interface:** USB2.0-A × 2
- **Dimensions:** 69.8 × 24.4 × 11.5 / 2.7" × 1.0" × 0.5"
- **Weight:** 14g/0.03lbs

## | SKU ID

FD010001

# Barcode Reader

| Model Name: FE01



## | FEATURES & BENEFITS

The Barcode Reader reads both 1D and 2D barcodes, and features a physical button for one-handed operation. Plus, the screw-lock design allows for user-friendly, on-the-go battery replacement.

## | SPECIFICATIONS

- **Dimensions:** 69.1 × 22.6 × 16.7mm / 2.7 × 0.9 × 0.6"
- **Weight:** 0.03lbs

## | SKU ID

FE010001



# Office Dock

| Model Name: XB01



## | FEATURES & BENEFITS

The Office Dock is equipped with two USB ports, one Ethernet port, and one VGA port, facilitating the connection of peripheral devices in an office setting. The office dock does not come with a separate power Adapter; rather, it shares a common adapter with its corresponding.

## | SPECIFICATIONS

- **Interface:** USB2.0-A × 2, RJ45, VGA, Type-C, DC Jack 19V
- **Docking Connector:** Pogo 7-Pin
- **Input:** DC 15-20V
- **Dimensions:** 240 × 151.8 × 175.9mm / 9.4" × 6.0" × 6.9"
- **Weight:** 853g/1.88lbs

## | SKU ID

XB010001

**RUGSTORM**

Specifications subject to change without notice.

Trademarks are property of their respective owners.

Copyright© 2023 Singapore Rugstorm Science & Technology Pte. Ltd.. All Rights Reserved.