

F100

ACCESSORY GUIDE



Power

Adapter - PA01

PA01EU01 (with EU Power Cord), PA01US01 (with US Power Cord)



Battery Charger - PC01

PC01EU01 (with EU Adapter), PC01US01 (with US Adapter)



Expansion Battery - PC01

PD010001



Carry

Hand Strap - CA03

CA030001



Shoulder Strap - CB01

CB010001



Function

RJ45&USB Module - FB02

FB020001



RS232 Module - FC02

FC020002



Fix

Office Dock - XB03

XB030001





VESA Mounting - XA01

XA010001



Vehicle Cradle- XC01

XC010001



Adapter

| Model Name: PA01



| FEATURES & BENEFITS

The Adapter is designed to supply power to the device and charge its internal battery from an AC power source. It includes a country-specific power cord that is compatible with your local power outlets.

| SPECIFICATIONS

- **Input:** 100V-240V AC, 50/60Hz, 1.6A
- **Output:** 19V DC, 3.42A, 65W
- **Dimensions:** 106.0 × 28.0 × 46.5mm / 4.2 × 1.1 × 1.8"
- **Weight:** 215g/0.47lbs
- **Cable Length:** 1500mm/4.9'

| SKU ID

PA01EU01 (with EU Power Cord), PA01US01 (with US Power Cord)

Battery Charger

| Model Name: PC01



■ Red: Charging

■ Green: Fully Charged

| FEATURES & BENEFITS

The Battery Charger includes a country-specific adapter that is compatible with your local power outlet. The multi-charge bay design allows you to charge up to 4 batteries simultaneously.

| SPECIFICATIONS

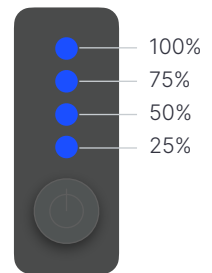
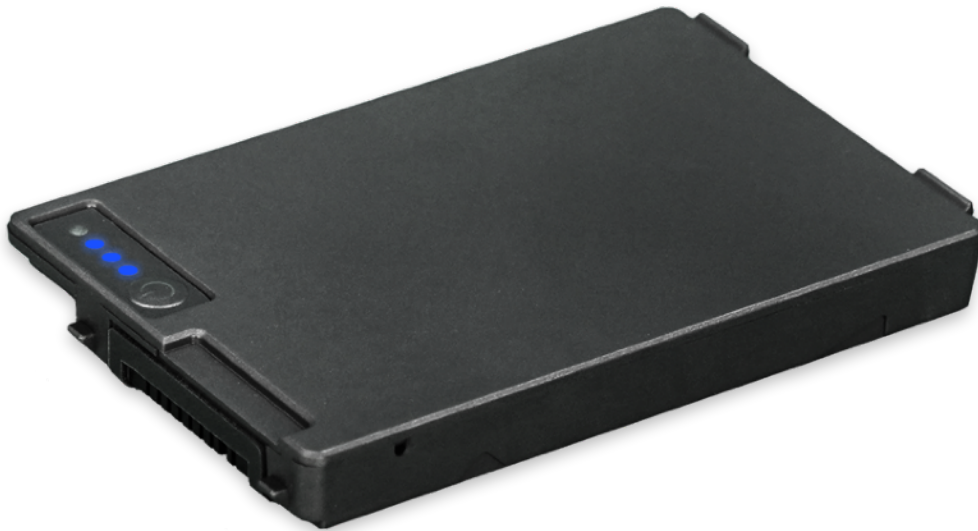
- Interface: I/O DC Jack (19V)
- Adapter AC Input: 100-240V 50/60Hz
- Adapter DC Output: 19V, 3.42A
- Dimensions: 125 × 85 × 28.2mm / 4.92 × 3.34 × 1.11"
- Weight: 208g/0.46lbs
- Compatible Model: PD01 (R70/F00 Expansion Battery)

| SKU ID

PC01EU01 (with EU Adapter), PC01US01 (with US Adapter)

Expansion Battery

| Model Name: PD01



| FEATURES & BENEFITS

The Expansion Battery features four charging indicators, each representing 25% of the charge. You can quickly check the charge by pressing the push-button.

| SPECIFICATIONS

- **Battery Type:** 7.6V, 4050mAh Lithium-ion Battery
- **Dimensions:** 109.8 × 72.9 × 12.7mm / 4.3 × 2.9 × 0.5"
- **Weight:** 164g/0.36lbs

| SKU ID

PD010001



Hand Strap

| Model Name: CA03



| FEATURES & BENEFITS

The Hand Strap is a lightweight and portable accessory that comes with a strap for holding the tablet. It helps prevent the tablet from slipping and improve work efficiency.

| SPECIFICATIONS

- **Dimensions:** 258.0 × 140.0mm / 10.2 × 5.5"
- **Main Material:** PU Leather
- **Installation Kit:** M2L5 Screw × 6, Screwdriver

| SKU ID

CA030001

Shoulder Strap

| Model Name: CB01



| FEATURES & BENEFITS

The Shoulder Strap provides a hands-free option for carrying the tablet, while also preventing accidental droop during movement. Its adjustable length adapts to a wide range of shoulder widths, making it perfect for cross-body and shoulder carry.

| SPECIFICATIONS

- **Length:** 680.0 ~ 1360.0mm / 26.4" ~ 53.1"
- **Width:** 19mm/0.7"
- **Main Material:** Nylon
- **Installation Kit:** M2L6.5 Screw × 2

| SKU ID

CB010001

RJ45&USB Module

| Model Name: FB02



| FEATURES & BENEFITS

The RJ45&USB Module, which integrates an RJ45 and USB interface, enhances the functionality of your tablets, making it suitable for a broader range of applications. The straightforward module replacement design allows for easy replacement.

| SPECIFICATIONS

- **Interface:** RJ45, USB 2.0-A × 1
- **Dimensions:** 72.6 × 21.9 × 26.9mm / 10.2 × 0.9 × 1.1"
- **Weight:** 26g/0.06lbs

| SKU ID

FB020001

RS232 Module

| Model Name: FC02



| FEATURES & BENEFITS

The RS232 Module can enhance the functionality of your tablets, making it suitable for a broader range of applications. The straightforward module replacement design allows for easy replacement.

| SPECIFICATIONS

- **Interface:** RS232
- **Dimensions:** 71.2 × 21.1 × 20.1mm / 2.8 × 0.8 × 0.8"
- **Weight:** 19g/0.04lbs

| SKU ID

FC020002

Office Dock

| Model Name: XB03



| FEATURES & BENEFITS

The Office Dock is equipped with two USB ports, one Ethernet port, and one VGA port, facilitating the connection of peripheral devices in an office setting. The office dock does not come with a separate power Adapter, it shares a common adapter with its corresponding.

| SPECIFICATIONS

- **Interface:** USB2.0-A × 2, DC Jack 19V, RJ45, VGA
- **Docking Connector:** Pogo-35 Pin
- **Input:** DC15-20V
- **Dimensions:** 240.0 × 151.8 × 229.1mm /9.4 × 6.0 × 9.0"
- **Weight:** 817g/1.81lbs

| SKU ID

XB030001

VESA Mounting

| Model Name: XA01



| FEATURES & BENEFITS

The VESA mount is a practical and convenient device that enables easy attachment of the tablet to the wall, saving space and providing easy access for use.

| SPECIFICATIONS

- **Dimensions:** 254.0 × 175.0 × 23.5mm /10.0 × 6.9 × 0.9"
- **Weight:** 384g/0.85lbs
- **Mounting Hole Pattern:** 75 × 75mm
- **Installation Kit:** M4L10 Screw × 6, M2L4 Screw × 6, Screwdriver

| SKU ID

XA010001

Vehicle Cradle

| Model Name: XC01



| FEATURES & BENEFITS

The Vehicle Cradle is designed to provide a secure location for tablet charging and security. The Key-Lock offers convenient and efficient charging solutions for mobile and in-vehicle workplaces.

| SPECIFICATIONS

- **Interface:** I/O 3-pin Terminal Block, DC Jack 19V
- **Adapter Input:** AC, 10-33V
- **Adapter Output:** DC 19V, 3.42A
- **Dimensions:** 280.0 × 233.4 × 75mm /11.0 × 8.8 × 3.0"
- **Weight:** 507g/1.11lbs
- **Mounting Hole Pattern:** 75 × 75mm
- **Installation Kit:** Screwdriver

| SKU ID

XC010001

RUGSTORM

Specifications subject to change without notice.

Trademarks are property of their respective owners.

Copyright© 2023 Singapore Rugstorm Science & Technology Pte. Ltd.. All Rights Reserved.